

STATE	REFERENCE PROJECT NO	FISCAL YEAR	SHEET NO	LAST SHEET NO
AL	SCP 59-986-26 (EAST)	2026	1	5

SHELBY COUNTY HIGHWAY DEPARTMENT

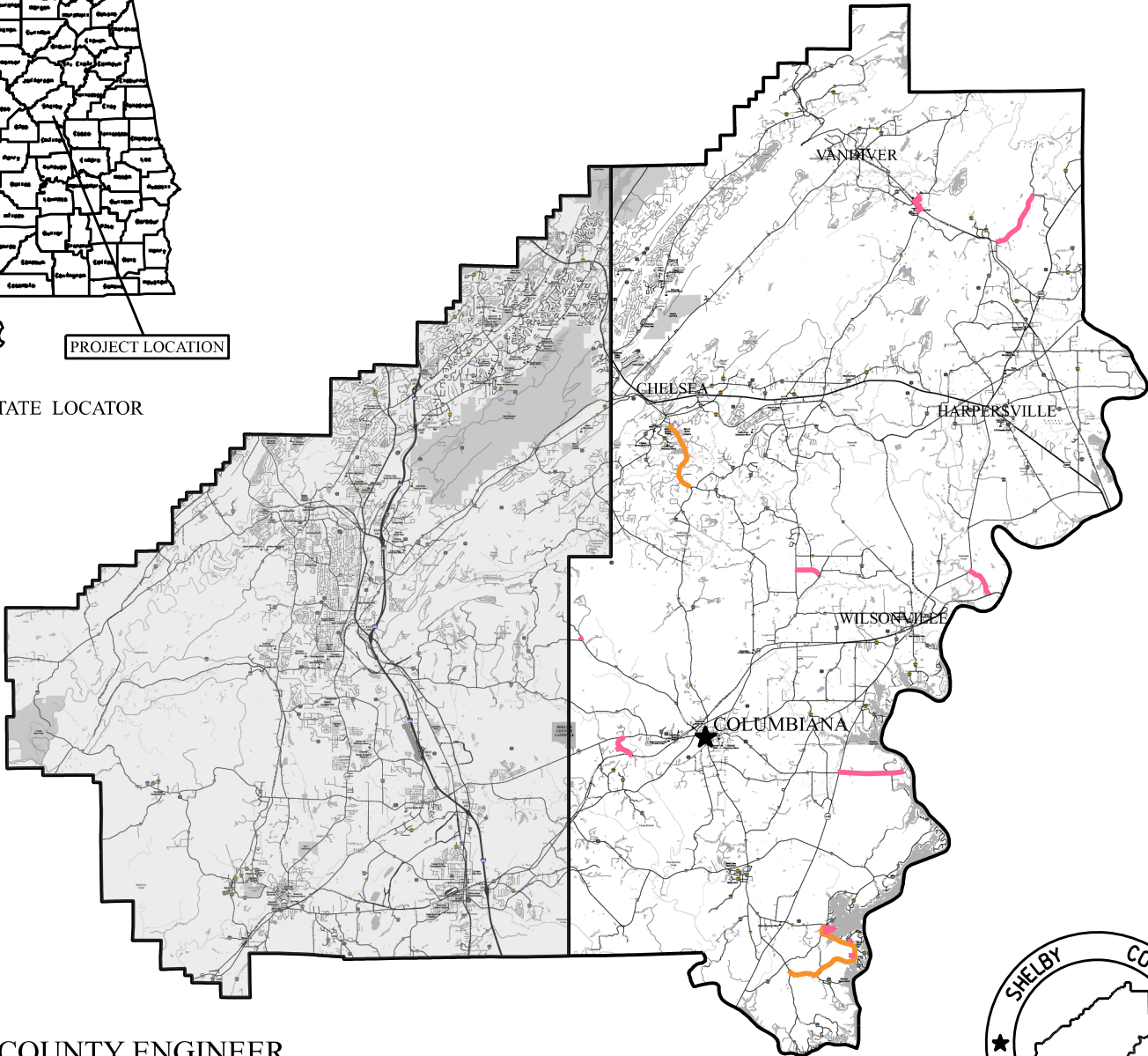
PLANS OF PROPOSED PROJECT SCP 59-986-26 (EAST)

REPAIR, RESURFACING & TRAFFIC STRIPE FOR VARIOUS COUNTY ROADS
IN EAST SHELBY COUNTY, AL



PROJECT LOCATION

STATE LOCATOR



COUNTY ENGINEER
DAVID WILLINGHAM, P.E.



COUNTY COMMISSIONERS

DISTRICT #1 KEVIN MORRIS	DISTRICT #2 TOMMY EDWARDS
DISTRICT #3 JON PARKER	DISTRICT #4 WARD WILLIAMS
DISTRICT #5 ELWYN BEARDEN	DISTRICT #6 JOSH SISK
DISTRICT #7 LINDSEY ALLISON	DISTRICT #8 RICK SHEPHERD
DISTRICT #9 DR. ROBBIE HAYES	

NOTE : THESE PLANS HAVE BEEN PREPARED TO
CONFORM WITH ALABAMA DEPARTMENT
OF TRANSPORTATION STANDARD
SPECIFICATIONS DATED 2022.

REFERENCE PROJECT NO	FISCAL YEAR	SHEET NO
SCP 59-986-26 (EAST)	2026	1A

PROJECT LOCATIONS PLANS OF PROPOSED PROJECT SCP 59-986-26 (EAST)

- #1E

CR-71
- #2E

Woodland Drive
- #3E

CR-415 (River Front Street)
- #4E

Willow Lane
- #5E

CR-408
- #6E

Christy Drive
- #7E

Dusty Hollow Road
- #8E

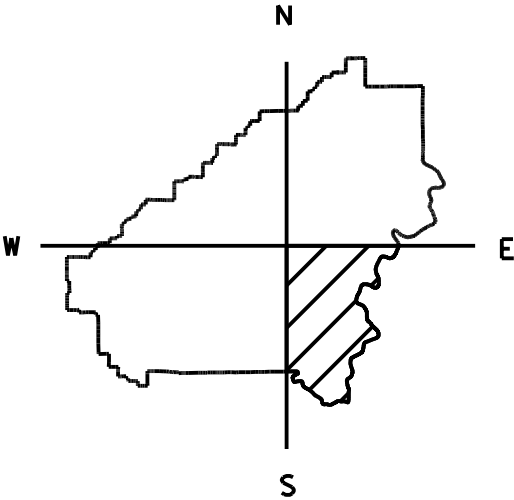
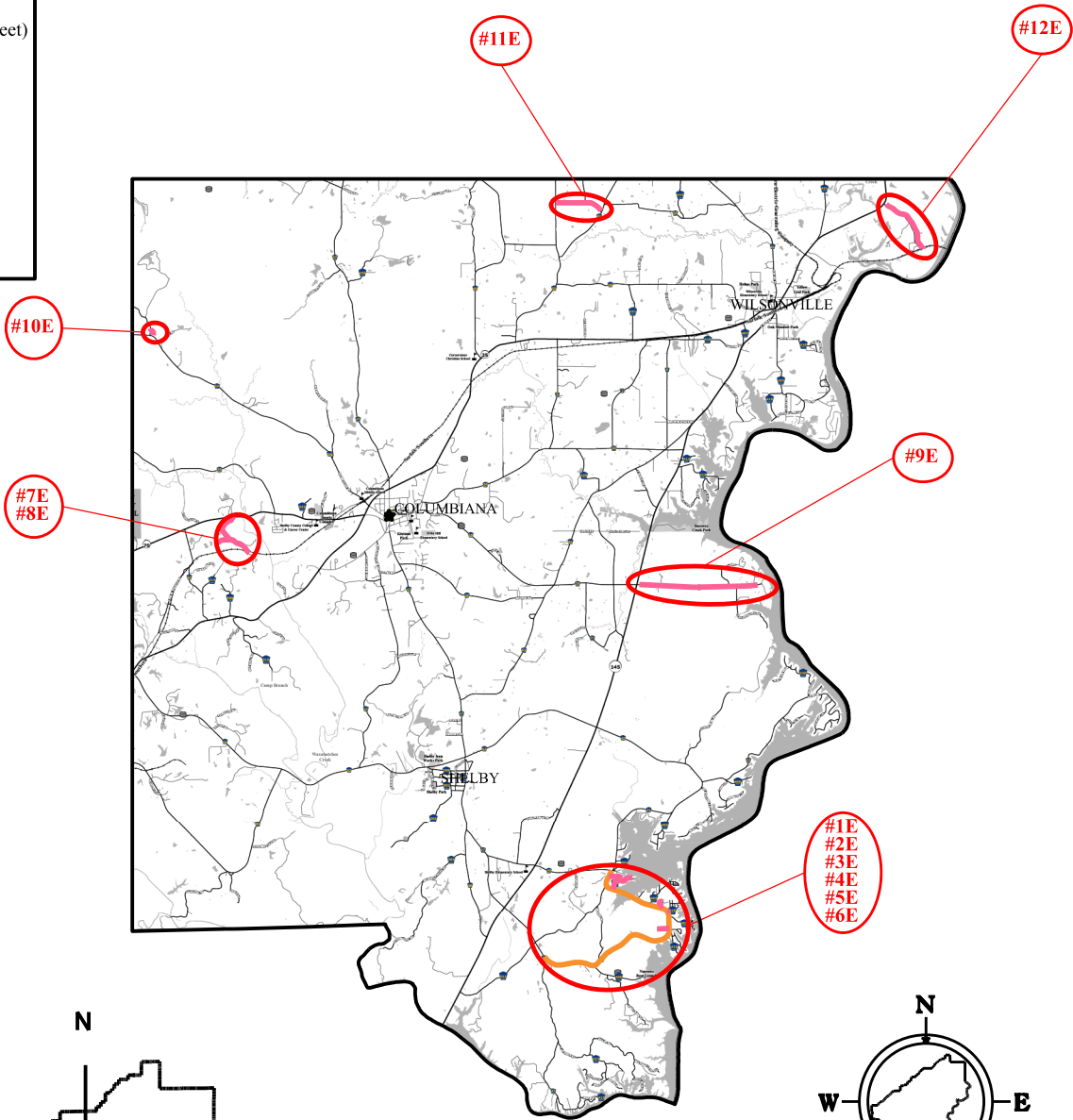
Vantana Drive
- #9E

CR-28
- #10E

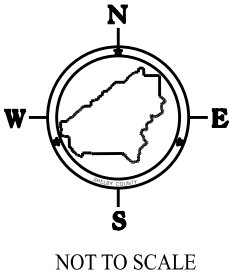
Queen Road
- #11E

CR-56
- #12E

Mallary Road



COUNTY LOCATOR



LEGEND	
PROPOSED PAVING	—
REBUILD	—

REFERENCE PROJECT NO	FISCAL YEAR	SHEET NO
SCP 59-986-26 (EAST)	2026	1B

PROJECT LOCATIONS PLANS OF PROPOSED PROJECT SCP 59-986-26 (EAST)

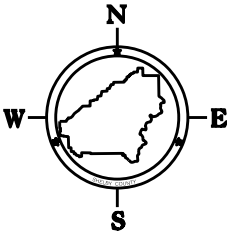
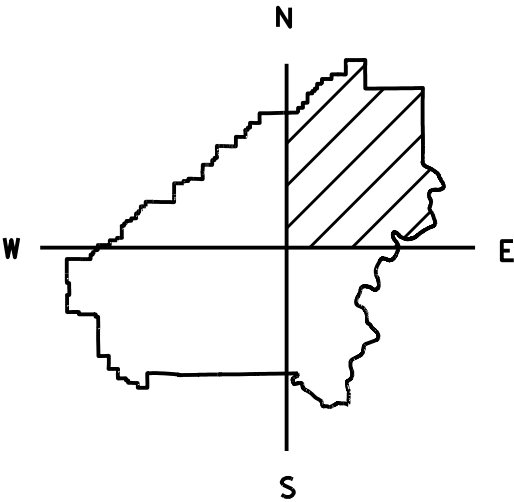
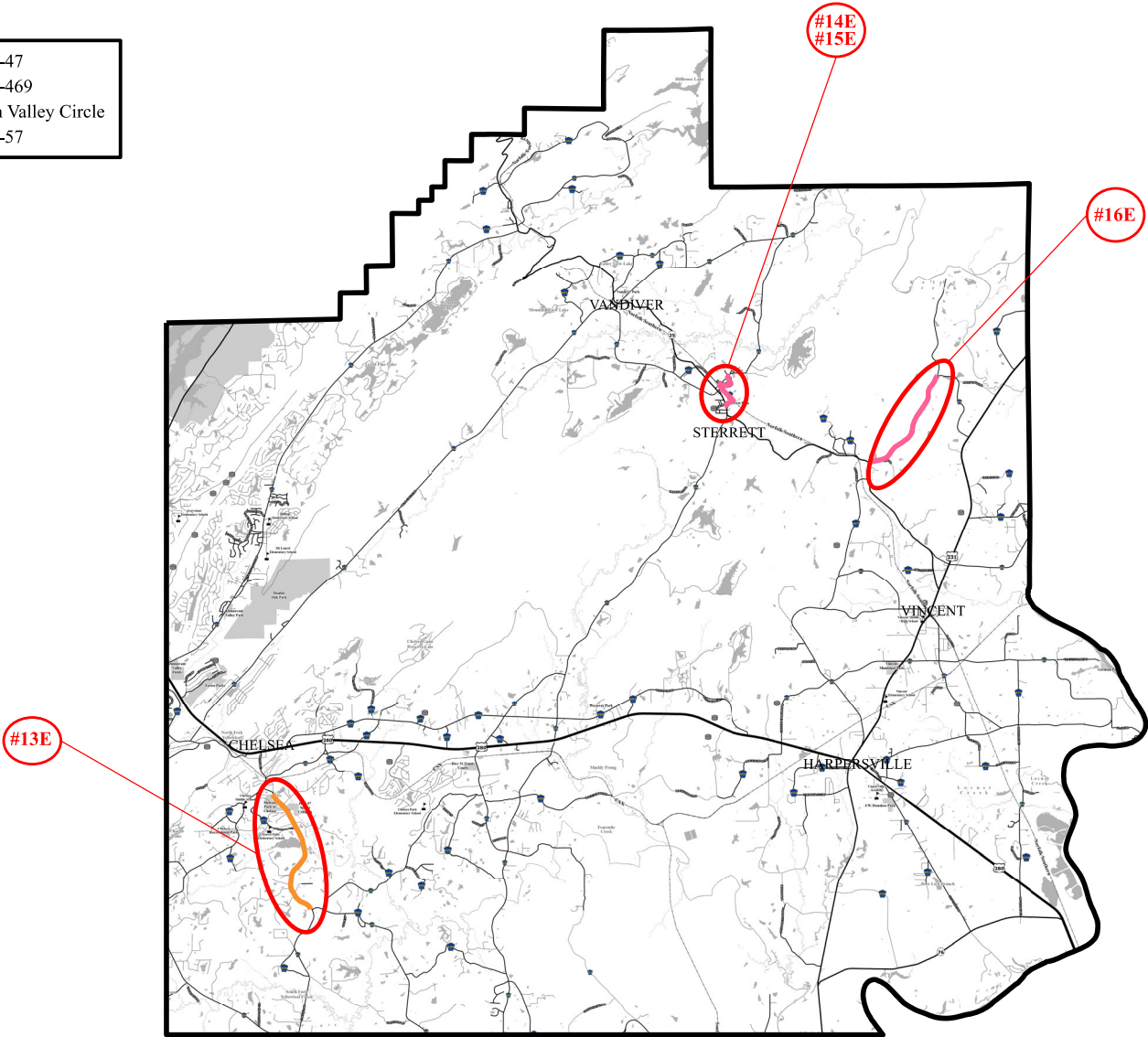
- #13E

CR-47
- #14E

CR-469
- #15E

Sun Valley Circle
- #16E

CR-57



LEGEND	
PROPOSED PAVING	—
REBUILD	—

REFERENCE PROJECT NO	FISCAL YEAR	SHEET NO
SCP 59-986-26 (EAST)	2026	1C

INDEX TO SHEETS
PROJECT NO. SCP 59-986-26 (EAST)
SHELBY COUNTY

SHEET NO. 1	TITLE SHEET
SHEET NO. 1A-1B	PROJECT LOCATIONS
SHEET NO. 1C	INDEX TO SHEETS
SHEET NO. 2-2C	TYPICAL SECTIONS
SHEET NO. 2D	UNIT DESCRIPTIONS
SHEET NO. 2E-2F	PROJECT NOTES
SHEET NO. 2G-2H	TRAFFIC CONTROL NOTES
SHEET NO. 3	SUMMARY OF QUANTITIES
SHEET NO. 3A-3D	SUMMARY OF QUANTITIES PER UNIT
SHEET NO. 4-5	TRAFFIC CONTROL PLANS

THE FOLLOWING IS A LIST OF STANDARD OR SPECIAL DRAWINGS CONTAINED IN THE ALABAMA DEPARTMENT OF TRANSPORTATION SPECIAL AND STANDARD HIGHWAY DRAWINGS BOOKLET DATED 2026 WHICH APPLY TO THIS PROJECT:

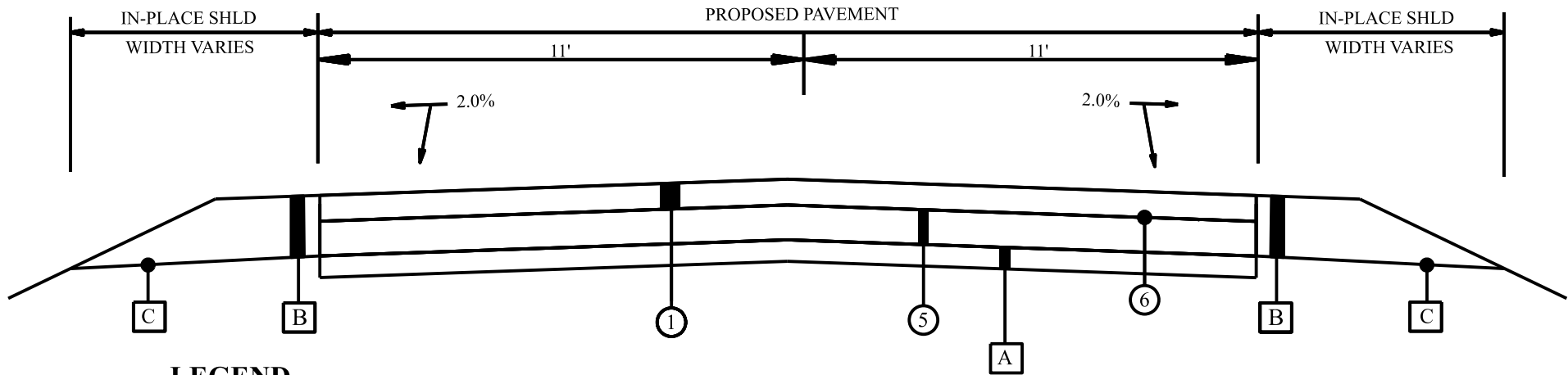
<u>INDEX NO.</u>	<u>DRAWING NO.</u>	<u>DESCRIPTION</u>
20901	MB-209-1	DETAILS OF MOUNTING MAILBOXES (SHEET 1 OF 3)
20902	MB-209-1	DETAILS OF MOUNTING MAILBOXES (SHEET 2 OF 3)
20903	MB-209-1	DETAILS OF MOUNTING MAILBOXES (SHEET 3 OF 3)
68004	TO-107	DETAILS OF INTERSECTION AND TURNOUTS
68019	SSEC-1	STANDARD SUPERELEVATION OF CURVES (SHEET 4 OF 14)
70101	PS-701-6	DETAILS OF TRAFFIC STRIPING FOR TWO LANE HIGHWAYS
70104	197-NPL	DETAILS OF NO PASSING LINES FOR TWO LANE, TWO DIRECTION ROADWAY
70301	TCM-703	PAVEMENT LEGENDS & MARKINGS (SHEET 1 OF 2)
70302	TCM-703	PAVEMENT LEGENDS & MARKINGS (SHEET 2 OF 2)
70308	CW-703	TYPICAL CROSSWALK LAYOUTS AND DETAILS
70311	SC-703	TYPICAL SCHOOL ZONE CROSSING PROTECTION SIGNING AND MARKINGS
70501	PM-705-1	DETAILS OF PAVEMENT MARKERS CLASS A, A-H & B
70504	PM-705-2	DETAILS SHOWING APPLICATION OF PAVEMENT MARKERS
71017	IHS-710-12	DETAILS OF ROADWAY SIGN POST (SMALL CHANNEL AND TUBULAR SECTION)
71032	IHS-710-21	DETAILS FOR LOCATION AND MOUNTING STANDARD FLAT PANEL SIGNS ON U-CHANNEL AND TUBULAR POSTS
71069	SHS-10	STANDARD HIGHWAY SIGNS
71090	SHS-26	STANDARD HIGHWAY SIGNS
71091	SHS-27	STANDARD HIGHWAY SIGNS
71092	SHS-28	STANDARD HIGHWAY SIGNS
71093	SHS-29	STANDARD HIGHWAY SIGNS
71094	SHS-30	STANDARD HIGHWAY SIGNS
71095	SHS-31	STANDARD HIGHWAY SIGNS
73030	T.S.D.-730-11	LOOP WIRE INSTALLATION
73501	RRX-107-1	RAILROAD CROSSING PASSIVE WARNING - SIGNS AND PAVEMENT MARKINGS
73504	RRX-107-2	RAILROAD CROSSING ACTIVE WARNING - SIGNS AND PAVEMENT MARKINGS
73507	RRX-107-3	DIMENSIONS FOR RAILROAD CROSSING SIGNS, SIGNALS, AND MARKINGS
74007	TCD-100	DETAILS FOR TRAFFIC CHANNELIZATION DEVICES
74201	PCMS-710	DETAILS OF PORTABLE CHANGEABLE MESSAGE SIGNS (SHEET 1 OF 3)
74202	PCMS-710	DETAILS OF PORTABLE CHANGEABLE MESSAGE SIGNS (SHEET 2 OF 3)
74203	PCMS-710	DETAILS OF PORTABLE CHANGEABLE MESSAGE SIGNS (SHEET 3 OF 3)

PROJECT NOTES: 201,202,203,204,205,206,
207,213,214,215,216,218,
219,221,222,223

TYPICAL SECTION
PROJECT NO. SCP 59-986-26 (EAST)
SHELBY COUNTY

PROJECT NUMBER	FISCAL YEAR	SHEET NO.	LAST SHEET
SCP 59-986-26 (EAST)	2026	2A	5

TYPICAL SECTION 10E Queen Road
APPLIES TO UNITS:



LEGEND

ITEM	UNIT	DESCRIPTION
① 424A-361	TON	REQ'D SUPERPAVE BITUMINOUS CONCRETE WEARING SURFACE LAYER, 3/4" MAXIMUM AGGREGATE SIZE MIX, ESAL RANGE C/D (165 LBS/SY: REFER TO SHEET 2D FOR RATES)
⑤ 424B-650	TON	REQ'D SUPERPAVE BITUMINOUS CONCRETE UPPER BINDER LAYER, 3/4" MAXIMUM AGGREGATE SIZE MIX, ESAL RANGE C/D (220 LBS/SY OR AS DIRECTED BY ENGINEER)
⑥ 424B-658	TON	REQ'D SUPERPAVE BITUMINOUS CONCRETE UPPER BINDER LAYER, LEVELING, 3/4" MAXIMUM AGGREGATE SIZE MIX, ESAL RANGE C/D (THICKNESS VARIES AS DIRECTED BY ENGINEER)
A		IN-PLACE CRUSHED AGGREGATE BASE (RETAIN)
B		PERMANENT SHOULDER WORK TO BE PERFORMED BY SHELBY COUNTY
C		IN-PLACE SHOULDER (RETAIN)

TYPICAL SECTION

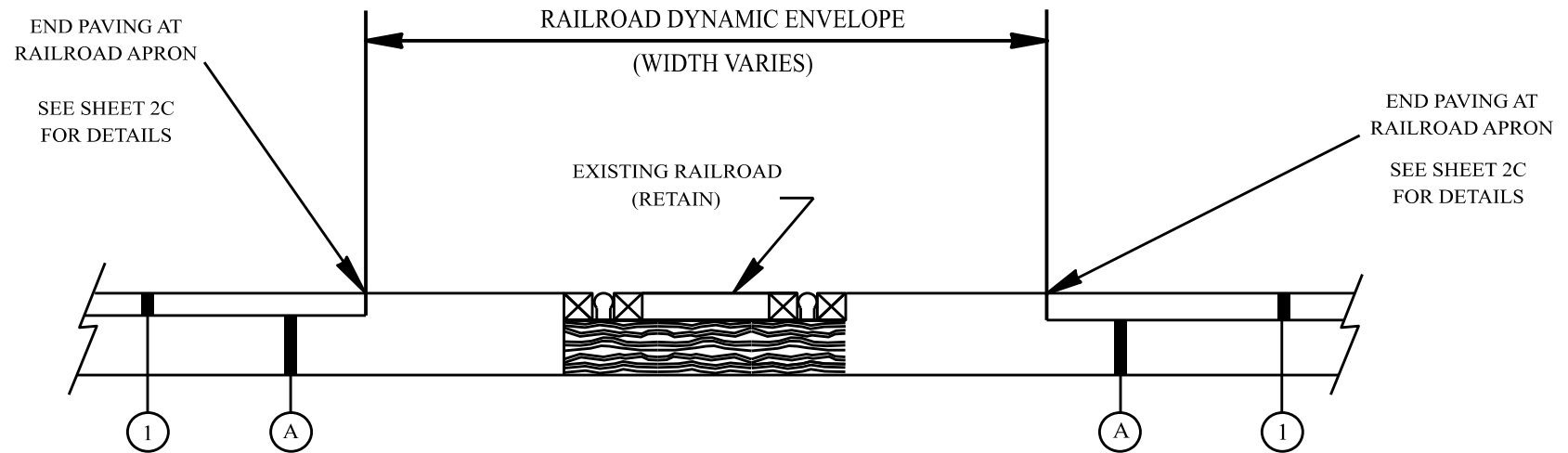
PROJECT NO. SCP 59-986-26 (EAST)

SHELBY COUNTY

PROJECT NUMBER	FISCAL YEAR	SHEET NO.	LAST SHEET
SCP 59-986-26 (EAST)	2026	2B	5

SKETCH SHOWING RESURFACING AT RAILROAD CROSSINGS:

CROSSING NO: 904939T (Dusty Hollow Road - Norfolk Southern)
728309P (CR-469 - Norfolk Southern)



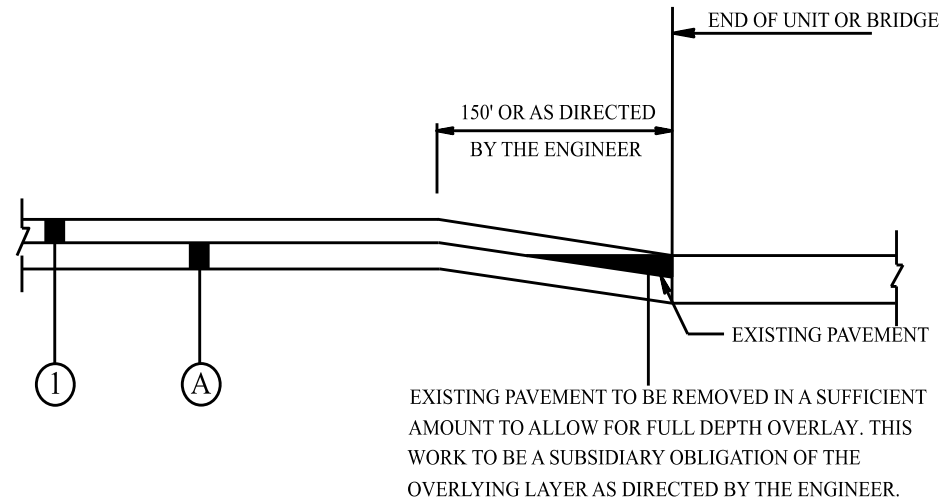
LEGEND

ITEM	UNIT	DESCRIPTION
① 424A-361	TON	REQ'D SUPERPAVE BITUMINOUS CONCRETE WEARING SURFACE LAYER, 3/4" MAXIMUM AGGREGATE SIZE MIX, ESAL RANGE C/D (SEE SHEET 2D FOR APPLICATION RATES)
Ⓐ		IN-PLACE PAVEMENT (RETAIN OR PLANE AS REQUIRED)

NOT TO SCALE

TYPICAL SECTION PROJECT NO. SCP 59-986-26 (EAST) SHELBY COUNTY

PROJECT NUMBER	FISCAL YEAR	SHEET NO.	LAST SHEET
SCP 59-986-26 (EAST)	2026	2C	5



SKETCH SHOWING PAVEMENT TIE AT BEGIN/END OF UNIT,
AT BRIDGE ENDS AND RR X-INGS

LEGEND

ITEM	UNIT	DESCRIPTION
①	424A-361 TON	REQ'D SUPERPAVE BITUMINOUS CONCRETE WEARING SURFACE LAYER, ¾" MAXIMUM AGGREGATE SIZE MIX, ESAL RANGE C/D (SEE SHEET 2D FOR APPLICATION RATES)
Ⓐ		IN-PLACE PAVEMENT (RETAIN OR PLANE AS REQUIRED)

NOT TO SCALE

Unit Descriptions					Reference Project No	Fiscal Year	Sheet No
County Named and Numbered Roads							
Unit #	Road Number / Name & Description	Length	Width	Comments	SCP 59-986-26 (East)	2026	2D
1E	CR-71 - From CR-47 to CR-46	24,460	21	Patch, "G" Treat, Spot Level, Seal 165# 3/4" Mix, Restripe			
2E	Woodland Drive - From CR-71 to Roads End	1,170	18	Patch, "G" Treat, Seal 165# 3/4" Mix			
3E	CR-415 (River Front Street) - From CR-71 to 1st Avenue	260	18	Patch, "G" Treat, Seal 165# 3/4" Mix, Restripe			
4E	Willow Lane - From CR-71 to end of maintenance	1,005	18	Patch, "G" Treat, Seal 165# 3/4" Mix, Restripe			
5E	CR-408 - From CR-71 East to Roads End	2,640	18	Patch, "G" Treat, Seal 165# 3/4" Mix, Restripe			
6E	Christy Drive - From CR-71 East to CR-408	1,480	17	Patch, "G" Treat, Seal 165# 3/4" Mix, Restripe			
7E	Dusty Hollow Road - South off of SR-70 just West of Columbiana	5,495	18	Patch, "G" Treat, Spot Level, Seal 165# 3/4" Mix, Restripe			
8E	Vantana Drive - Off of Dusty Hollow Road	1,280	18	"G" treat, Spot Level, Seal 165# 3/4" Mix			
9E	CR-28 - From SR-145 East to Roads End	11,500	21	Patch, "G" treat, Spot Level, Seal 165# 3/4" Mix, Restripe			
10E	Queen Road - Realigned portion at Joinertown Road	750	22	220# Binder Layer, Spot Level, Seal 165# 3/4" Mix, Stripe			
11E	CR-56 - From CR-55 to CR-61	4,620	19	Patch, "G" Treat, Spot Level, Seal 165# 3/4" Mix, Restripe			
12E	Mallary Road - East off SR-25 just North of Wilsonville	6,150	21	Patch, "G" Treat, Spot Level, Seal 165# 3/4" Mix, Restripe			
13E	CR-47 - From CR-49 to 47/39 Realignment joint	13,830	28-40	Patch, "G" treat, Spot Level, Seal 185# 3/4" Mix, Restripe			
14E	CR-469 - From SR-25 to May Street Connector	3,460	10-14	Patch, "G" Treat, Spot Level, Seal 165# 3/4" Mix, Restripe			
15E	Sun Valley Circle - Loop off of CR-55 in Sterrett	2,390	12	Patch, "G" treat, Spot Level, Seal 165# 3/4" Mix, Restripe			
16E	CR-57 - From Highway 25 to Highway 59	12,000	21	Patch, "G" treat, Spot Level, Seal 165# 3/4" Mix, Restripe			

REFERENCE PROJECT NO	FISCAL YEAR	SHEET NO
SCP 59-986-26 (EAST)	2026	2E

PROJECT NOTES
PROJECT NO. SCP 59-986-26 (EAST)
SHELBY COUNTY

- 201: THE MINIMUM REQUIREMENTS FOR PAVING OF TURNOUTS SHALL BE AS FOLLOWS, UNLESS OTHERWISE DIRECTED BY PROJECT ENGINEER:
- a. CITY STREETS, COUNTY ROADS AND STATE HIGHWAYS--PAVE TO THE BACK OF RADIUS WITH JOINTS MILLED BY MILLING MACHINE FULL WIDTH AS DESIGNATED BY PROJECT ENGINEER.
 - b. BUSINESS DRIVEWAYS--PAVE TO THE BACK OF THE EXISTING SHOULDER.
 - c. ALL OTHER TURNOUTS (INCLUDING RESIDENTIAL NON-CONCRETE DRIVEWAYS)--PAVE A MINIMUM OF 3'. ALL CONCRETE DRIVEWAYS SHALL BE PAVED A MINIMUM OF 3' AT ENGINEER'S DISCRETION.
 - d. PARTICULAR ATTENTION WILL BE GIVEN TO THE SLOPE OF ALL DRIVES EITHER RESIDENTIAL OR COMMERCIAL TO ASSURE EASY PASSAGE ON AND OFF THE ROADWAY. IT WILL BE THE RESPONSIBILITY OF THE CONTRACTOR TO EITHER MAKE NECESSARY ADJUSTMENTS DURING ONGOING PHASES OF PAVING OPERATION OR ADJUST AT A LATER DATE AS DIRECTED BY THE PROJECT ENGINEER.
- 202: RESURFACING OVERLAYS SHALL MATCH EXISTING CROSS-SLOPE UNLESS DIRECTED OTHERWISE BY THE PROJECT ENGINEER.
- 203: ALL SHOULDERS ON ALL UNITS SHALL BE CLIPPED AND BROOMED TO THE ENGINEER'S SATISFACTION PRIOR TO ANY AND ALL RESURFACING.
- 204: ALL EXCESS STONE WILL BE THE RESPONSIBILITY OF THE CONTRACTOR TO REMOVE FROM INTERSECTIONS, PARKING LOTS, DRIVEWAYS, AND ALL PUBLIC PROPERTIES. ALL EXCESS STONE SHALL BE REMOVED DAILY, UNLESS OTHERWISE DIRECTED BY THE PROJECT ENGINEER.
- 205: ALL SUBDIVISION UNIT TRUCK LOAD LIMITS SHALL BE IN ACCORDANCE WITH SHELBY COUNTY, TRUCK WEIGHT ORDINANCE (9 TONS PER AXLE). TRUCK WEIGHTS MAY BE RESTRICTED ON OTHER UNITS AT SHELBY COUNTY'S DISCRETION.
- 206: ITEM 424B-658, BITUMINOUS CONCRETE PLANT MIX, LEVELING ¾" MAX ESAL C/D SHALL BE APPLIED AS DIRECTED BY THE PROJECT ENGINEER.
- 207: CONTRACTOR SHALL TIE BEGINNING AND ENDING OF PROJECT AND AT BRIDGE CROSSINGS AS SHOWN IN THE SKETCH ON SHEET 2C.
- 208: MOBILIZATION AND CONSTRUCTION FUEL SHALL BE SUBSIDIARY OBLIGATION OF THE CONTRACT.
- 209: EXCESS MATERIAL THAT CANNOT BE USED TO FLUSH SLOPES WITHIN A PROJECT AREA SHALL BE WASTED AS DIRECTED BY THE PROJECT ENGINEER.
- 210: CONTRACTOR IS ULTIMATELY RESPONSIBLE FOR THE CONTINUOUS AND PROPER OPERATION OF ALL EXISTING UTILITIES. THE COUNTY SHALL COORDINATE RELOCATION OF UTILITIES WITH THE AFFECTED UTILITY COMPANIES.
- 211: CONTRACTOR IS RESPONSIBLE FOR MAKING CONTACT WITH LOCAL WATER AUTHORITIES AND OBTAINING PERMISSION OR A METER WITH WHICH TO ACQUIRE WATER FOR USE DURING THE PROJECT.
- 212: BASE LAYER COMPACTION SHALL MEET 100% OF THE MAXIMUM THEORETICAL DENSITY OF THE MATERIAL SPECIFIED TO THE SATISFACTION OF THE COUNTY ENGINEER.
- 213: ITEM 405A-000 SHALL BE MECHANICALLY APPLIED TO ACHIEVE UNIFORM DISTRIBUTION. HAND APPLICATION WILL BE ALLOWED ONLY ON TURNOUTS AND INTERSECTIONS.
- 214: UNITS #1E (CR-71) & #13E (CR-47) ARE DESIGNATED AS REBUILD ALABAMA ACT UNITS. THE CONTRACTOR SHALL INSTALL REBUILD ALABAMA SIGNAGE AT EACH END OF THE APPLICABLE UNITS PRIOR TO CONSTRUCTION. DETAILS AND SPECIFICATIONS ON THE REQUIRED SIGN RA-1 ARE INCLUDED ON THE ALDOT STANDARD DRAWING SHS-10, INDEX 71069. THE COST FOR THE PROCUREMENT AND INSTALLATION OF THESE SIGNS IS SUBSIDIARY TO THE CONTRACT.
- 215: ANY MAILBOX RESETS REQUIRED TO COMPLETE THE WORK IN THIS CONTRACT SHALL BE PERFORMED BY THE CONTRACTOR AND IS A SUBSIDIARY OBLIGATION OF THE CONTRACT.
- 216: ANY ROADWAYS WITH A TOTAL WIDTH OF LESS THAN 20' SHALL BE PAVED USING A MATERIAL STRIKE OFF PLATE.

REFERENCE PROJECT NO	FISCAL YEAR	SHEET NO
SCP 59-986-26 (EAST)	2026	2F

PROJECT NOTES **PROJECT NO. SCP 59-986-26 (EAST)** **SHELBY COUNTY**

- 217: IT SHALL BE THE CONTRACTOR'S RESPONSIBILITY TO INVENTORY ALL IN-PLACE STRIPING, MARKINGS AND LEGENDS AND REFERENCE THE LOCATIONS, SO THAT ALL REQUIRED STRIPING, MARKINGS AND LEGENDS SHALL BE PLACED BACK IN THE SAME LOCATIONS AS THEY WERE BEFORE RESURFACING OPERATIONS BEGAN. THE WORK INVOLVED IN INVENTORYING AND REFERENCING SHALL BE A SUBSIDIARY OBLIGATION OF ITEM 701A-230. IF IN-PLACE STRIPING, MARKINGS AND LEGENDS DIFFER FROM REQUIREMENTS ON STANDARD DRAWINGS OR THE MUTCD, THE PROJECT ENGINEER SHALL BE NOTIFIED BEFORE WORK BEGINS.
- 218: ALL PATCHING SHALL BE IN ACCORDANCE WITH ARTICLE 410.03(c) AND SUBARTICLE 410.09(a) AND COMPLETED PRIOR TO RESURFACING. PATCHES SHALL BE A MINIMUM WIDTH OF 7'-0" AND MINIMUM DEPTH OF 4". THE EXACT LOCATION, WIDTH, LENGTH, AND DEPTH SHALL BE DETERMINED BY THE ENGINEER.
- 219: IF A DROP OFF OCCURS IN A TRANSVERSE DIRECTION DURING THE CONSTRUCTION OF THIS PROJECT, THE CONTRACTOR SHALL CONSTRUCT A TEMPORARY BITUMINOUS WEDGE AS DIRECTED BY THE ENGINEER. THE WORK, IF REQUIRED, SHALL BE PAID FOR AS ITEM 424A-340 OR 424A-361 DEPENDING UPON LOCATION OF WEDGE.
- 220: TEMPORARY TRAFFIC CONTROL MARKINGS SHALL BE USED FOR STOP LINES AND ARROWS ONLY. 4 INCH TEMPORARY STRIPE SHALL BE USED FOR A TEMPORARY CHANNELIZING STRIPE AS DIRECTED BY THE ENGINEER.
- 221: ANY DAMAGE TO IN-PLACE PAVING, CURB AND GUTTER, SIDEWALK, GRASSING, ETC. SHALL BE REPAIRED BY THE CONTRACTOR TO THE SATISFACTION OF THE ENGINEER AT NO COST TO THE PROJECT.
- 222: ANY MANHOLE OR UTILITY RESETS NECESSARY TO COMPLETE THE WORK SHALL BE PERFORMED BY THE CONTRACTOR. THE COST OF THIS WORK SHALL BE A SUBSIDIARY OBLIGATION OF THE CONTRACT.
- 223: REMOVAL OF PAVEMENT MARKERS PRIOR TO RESURFACING SHALL BE PERFORMED BY THE CONTRACTOR. THE COST OF THIS WORK SHALL BE A SUBSIDIARY OBLIGATION OF THE CONTRACT.
- 224: THE PRIME CONTRACTOR SHALL INSTALL A MINIMUM OF 70% OF THE TOTAL TONNAGE REQUIRED FOR ITEM 424A-361 UNLESS OTHERWISE APPROVED BY THE SHELBY COUNTY ENGINEER.
- 225: ALL PAY ITEM WORK SHALL BE PERFORMED WITH A SHELBY COUNTY INSPECTOR ON SITE.
- 226: THE CONTRACTOR WILL HAVE 15 WORKING DAYS AFTER THE CURING PERIOD TO INSTALL PERMANENT TRAFFIC STRIPE AND PAVEMENT MARKERS. IF THESE ITEMS ARE NOT INSTALLED WITHIN 15 WORKING DAYS AFTER THE CURING PERIOD, THE CONTRACTOR SHALL BE RESPONSIBLE FOR APPLYING TEMPORARY APPLICATIONS EVERY MONTH UNTIL THE PERMANENT STRIPE IS COMPLETE. THIS NOTE SHALL ONLY APPLY TO UNITS #1E (CR-71), #9E (CR-28), #11E (CR-56), #12E (MALLARY ROAD), & #13E (CR-47).
- 227: UNIT #13E (CR-47) SHOULD BE CONSIDERED FOR POSSIBLE NIGHT WORK DUE TO TRAFFIC VOLUMES.
- 228: THE CONTRACTOR SHALL PROVIDE AN OFF-DUTY POLICE OFFICER ON SITE FOR TRAFFIC CONTROL WHEN WORKING AT NIGHT. ANY ADDITIONAL COSTS ASSOCIATED WITH NIGHT WORK INCLUDING, BUT NOT LIMITED TO SIGNS, LIGHTS, POLICE OFFICERS, ETC. SHALL BE THE RESPONSIBILITY OF THE CONTRACTOR AND SHALL BE CONSIDERED A SUBSIDIARY OBLIGATION OF THE CONTRACT. THE CONTRACTOR SHALL NOTIFY THE SHELBY COUNTY HIGHWAY DEPARTMENT A MINIMUM OF ONE MONTH IN ADVANCE OF ANY NIGHT WORK.
- 229: UNIT #13E (CR-47) SHALL HAVE NO LANE CLOSURES ALLOWED BETWEEN THE HOURS OF 6:00-8:30 AM OR 4:00-6:00 PM UNLESS OTHERWISE DIRECTED BY THE PROJECT ENGINEER.
- 230: NO SECTION OF PAVEMENT SHALL BE LEFT OVERNIGHT WITHOUT TRAFFIC STRIPING OR RAILROAD MARKINGS BEING IN PLACE. THIS INCLUDES BITUMINOUS TREATMENT "G" AND FINAL WEARING LAYER.
- 231: UNIT #13E (CR-47) SHALL BE INITIATED AND COMPLETED AFTER MAY 22, 2026 AND PRIOR TO AUGUST 7, 2026. THE CONTRACTOR WILL BE ASSESSED A PENALTY OF \$1,000.00 PER DAY FOR EACH DAY THAT PAVING WORK ON THE SUBJECT UNITS IS PERFORMED OUTSIDE OF THE APPROVED DATES.
- 232: THE CONTRACTOR SHALL NOTIFY THE RAILROAD IN WRITING A MINIMUM OF 30 DAYS BEFORE WORK IS TO BE PERFORMED WITHIN THE RAILROAD'S RIGHT-OF-WAY. THE CONTRACTOR SHALL TAKE MEASURES TO PERMIT THE WORK AND SECURE CLEARANCE FROM THE RAILROAD BEFORE PROCEEDING. THE CONTRACTOR SHALL COMPLY WITH THE RAILROAD'S SAFETY RULES FOR ANY PERSONNEL WORKING ON THE RAILROAD'S RIGHT-OF-WAY. IT SHALL BE THE CONTRACTOR'S RESPONSIBILITY TO TAKE ALL PRECAUTIONS NECESSARY NOT TO DAMAGE THE RAILROAD'S PROPERTY. IF DAMAGE DOES OCCUR, THE CONTRACTOR WILL BE RESPONSIBLE FOR HAVING THE PROPERTY CORRECTED OR REPLACED, WHICHEVER THE RAILROAD COMPANY DEEMS NECESSARY.
- 233: THE CONTRACTOR SHALL COMPLETE THE ENTIRE PROJECT BY OCTOBER 23, 2026. THE CONTRACTOR IS SUBJECT TO PENALTY AS DEFINED IN ARTICLE 108.11 OF THE ALABAMA STANDARD SPECIFICATIONS 2022 EDITION IF ALL WORK (INCLUDING SUBSIDIARY WORK) IS NOT COMPLETED BY SAID DATE.

REFERENCE PROJECT NO	FISCAL YEAR	SHEET NO
SCP 59-986-26 (EAST)	2026	2G

TRAFFIC CONTROL NOTES
PROJECT NO. SCP 59-986-26 (EAST)
SHELBY COUNTY

700. THE TRAFFIC CONTROL PLAN IS DEVELOPED IN CONFORMANCE WITH THE MANUAL ON UNIFORM TRAFFIC CONTROL DEVICES PART 6, 2009 EDITION. THE TRAFFIC CONTROL DEVICES INDICATED REPRESENT CONDITIONS KNOWN DURING PLAN DEVELOPMENT. IN THE EVENT ACTUAL PHYSICAL CONDITIONS WARRANT ADDITIONAL TRAFFIC CONTROL DEVICES, THEY SHALL BE INSTALLED IN CONFORMANCE WITH THE MUTCD PART 6 AS DIRECTED BY THE ENGINEER. COST SHALL BE PAID FOR AS A SUBSIDIARY OBLIGATION.
701. THE CONTRACTOR WILL BE PERMITTED TO DEVELOP HIS OWN TRAFFIC CONTROL PLAN TO BE USED IN LIEU OF THIS TRAFFIC CONTROL PLAN IF APPROVED BY THE ENGINEER. A CONTRACTOR DEVELOPED TRAFFIC CONTROL PLAN SHALL BE A SUBSIDIARY COST OF THE CONTRACT.
702. THE CONTRACTOR SHALL ENSURE THAT ALL TRAFFIC CONTROL DEVICES ARE PLACED AS REQUIRED IN THE TRAFFIC CONTROL PLANS AND ARE IN SERVICEABLE CONDITION AT ALL TIMES.
703. ALL SIGNS AND BARRICADES MAY BE ADJUSTED BY THE ENGINEER FOR THE SAFETY OF THE TRAVELING PUBLIC WHEN NECESSARY.
704. ADDITIONAL SIGNS MAY BE REQUIRED IF DEEMED NECESSARY BY THE ENGINEER. ADDITIONAL ITEMS TO BE A SUBSIDIARY COST OF THE CONTRACT.
705. NO DIRECT PAYMENT WILL BE MADE FOR REMOVING, RELOCATING, OR COVERING OF IN PLACE SIGNS, BARRELS, BARRICADES, OR OTHER TRAFFIC CONTROL DEVICES AS REQUIRED IN THIS TRAFFIC CONTROL PLAN (SEE SPECIAL DRAWING NO. TCD-100 IN THE ALABAMA DEPARTMENT OF TRANSPORTATION'S SPECIAL AND STANDARD HIGHWAY DRAWINGS, 2024 EDITION). COST TO BE A SUBSIDIARY OBLIGATION OF THE CONTRACT.
706. THE QUANTITIES SHOWN ON THE TRAFFIC CONTROL PLAN SHEET ARE CONSIDERED TO BE THE MINIMUM REQUIREMENT FOR HANDLING TRAFFIC AT ANY GIVE TIME DURING CONSTRUCTION.
707. THE CONTRACTOR IS TO REMOVE, RELOCATE, OR COVER DURING CONSTRUCTION AND THEN RESET OR UNCOVER UPON COMPLETION OF A PARTICULAR SECTION ANY CONFLICTING IN-PLACE ROADWAY SIGNS AS DIRECTED BY THE ENGINEER. COST TO BE A SUBSIDIARY OBLIGATION OF THE CONTRACT.
708. ALL CONSTRUCTION SIGNS PLACED BEFORE WORK BEGINS SHALL BE COVERED WITH BLACK PLASTIC OR SOME OTHER SUITABLE MATERIAL SO THAT THE SIGNS ARE NOT VISIBLE UNTIL WORK IS IN PROGRESS.
709. ALL TRAFFIC CONTROL DEVICES SHALL BE A SUBSIDIARY COST OF THE CONTRACT.
710. ALL BLACK ON ORANGE CONSTRUCTION SIGNS SHALL BE FABRICATED USING TYPES IV OR VIII FLUORESCENT ORANGE REFLECTIVE SHEETING MATERIAL FOR THE SIGN BACKGROUND.
711. DURING NON-WORKING HOURS NO EQUIPMENT OR MATERIAL SHALL BE PARKED OR STORED CLOSER THAN 30 FEET TO THE EDGE OF ANY ROADWAY CARRYING TRAFFIC. WHEN THIS IS NOT PRACTICAL, IT SHALL BE PLACED IN AN AREA APPROVED BY THE ENGINEER AND DELINEATED BY REFLECTORIZED DRUMS. THIS INCLUDES STORAGE OF TRAFFIC CONTROL DEVICES SUCH AS TRAILER MOUNTED OR OTHER TEMPORARY SIGNS, BARRICADES, DRUMS, ETC., WHICH ARE NOT IN USE DURING NON-WORKING HOURS. THESE ARE TO BE FURNISHED BY THE CONTRACTOR WITHOUT COST TO SHELBY COUNTY.

REFERENCE PROJECT NO	FISCAL YEAR	SHEET NO
SCP 59-986-26 (EAST)	2026	2H

TRAFFIC CONTROL NOTES
PROJECT NO. SCP 59-986-26 (EAST)
SHELBY COUNTY

712. WHERE THE LOCATION OF A REQUIRED SIGN FALLS IN A DRIVEWAY, SIDEWALK, BRIDGE, ETC., OR WHERE THE VISIBILITY OF A SIGN IS LIMITED TO THE TRAVELING PUBLIC, THE LOCATION SHALL BE ADJUSTED AS DIRECTED BY THE ENGINEER.
713. THE CONTRACTOR SHALL PLACE ALL ADVANCE WARNING SIGNS BEFORE PROCEEDING WITH THIS WORK.
714. ALL VEHICLES, EQUIPMENT, PERSONNEL (EXCEPT FLAGGERS), AND THEIR ACTIVITIES, ARE RESTRICTED AT ALL TIMES TO ONE SIDE OF THE PAVEMENT UNLESS OTHERWISE AUTHORIZED BY THE ENGINEER.
715. THE CONTRACTOR SHALL MAINTAIN AT LEAST ONE ACCESS TO BUSINESSES AND RESIDENCES DURING ALL PHASES OF CONSTRUCTION.
716. CONSTRUCTION SIGNS MOUNTED ON TEMPORARY SUPPORTS SHALL BE MOUNTED AT A MINIMUM HEIGHT OF 5 FEET.
717. FLAGGERS SHALL BE PROPERLY ATTIRED, EQUIPPED WITH STAFF MOUNTED STOP/SLOW PADDLES IN SIGHT OF EACH OTHER OR HAVE DIRECT COMMUNICATION AT ALL TIMES. FLAGGER STATION LOCATION MAY BE VARIED FROM THOSE SHOWN BASED ON ROADWAY CONDITIONS AT THE TIME OF THE LANE CLOSURE.
718. FLAGGERS ARE TO BE USED WHEN DIRECTED BY THE ENGINEER. SIGNS SHALL BE PLACED AT THE APPROPRIATE TIME AND SHALL BE COVERED OR REMOVED WHEN FLAGGERS ARE NOT ON DUTY AND DURING NON-WORKING HOURS.
719. FOR MOVING OPERATIONS, THE TRAFFIC CONES MAY BE DELETED IF THE FLAGGERS ARE IN SIGHT OF EACH OTHER OR IF A PILOT CAR IS USED ON A TWO LANE ROADWAY.
720. DURING THE WIDENING OR RESURFACING OF ANY ROADWAY CARRYING TRAFFIC, THE CONTRACTOR SHALL ADVISE THE MOTORISTS OF ANY EDGE OF PAVEMENT DROP-OFFS 3 INCHES OR GREATER BY PLACING SHOULDER DROP-OFF SIGNS EVERY ½ MILE BEGINNING PRIOR TO THE WIDENING OR RESURFACING. REQUIRED SHOULDER WORK TO ELIMINATE THE DROP-OFFS SHALL BE PURSUED IN AN EXPEDITIOUS MANNER FOLLOWING THE WIDENING AND/OR RESURFACING.
721. DURING THE WIDENING OR RESURFACING OF ANY ROADWAY CARRYING TRAFFIC, THE CONSTRUCTION ZONE SHALL NOT BE LONGER THAN 2 MILES AT ANY GIVEN TIME.

Summary of Quantities				Reference Project No	Fiscal Year	Sheet No
Pay Item	Unit	Quantity	Description			
401B111	SY	217,910	G-Treatment (With Polymer Additive)	SCP 59-986-26 (East)	2026	
405A000	Gal.	2,275	Tack Coat			
410H000	EA	2	Material Remixing Device			
424A361	Ton	18,680	Bit. Wearing Surface 3/4" Max - ESAL (C/D)			
424A370	Ton	450	Widening - Bit. Wearing Surface 3/4" Max - ESAL (C/D)			
424B650	Ton	210	Bit. Upper Binder 3/4" Mix - ESAL (C/D)			
424B656	Ton	1,790	Patching - Bit. Upper Binder 1.5" Max - ESAL (C/D)			
424B658	Ton	1,455	Leveling - Bit. Upper Binder 3/4" Max - ESAL (C/D)	2026		
701A011	Mile	1	Broken Yellow, Class 1, Type A Traffic Stripe (5" Wide)			
701A016	Mile	2	Solid Yellow, Class 1, Type A Traffic Stripe (5" Wide)			
701A227	Mile	29	Solid White, Class 2, Type A Traffic Stripe (5" Wide)			
701A230	Mile	27	Solid Yellow, Class 2, Type A Traffic Stripe (5" Wide)			
701A244	Mile	4	Broken Yellow, Class 2, Type A Traffic Stripe (5" Wide)			
701B207	LF	500	Dotted, Class 2, Type A Traffic Stripe			
701C002	Mile	4	Broken Temporary Traffic Stripe (Paint)			
701C003	Mile	65	Solid Temporary Traffic Stripe (Paint)			
703A002	SF	3,264	Traffic Control Markings, Class 2, Type A			
703B002	SF	431	Traffic Control Legends, Class 2, Type A			
703D002	SF	2,101	Temporary Traffic Control Markings (Paint)			
705A030	EA	36	Pavement Markers, Class A-H, Type 2-C			
705A032	EA	210	Pavement Markers, Class A-H, Type 1-B			
705A037	EA	1,857	Pavement Markers, Class A-H, Type 2-D			
705A038	EA	160	Pavement Markers, Class A-H, Type 2-E			

SUMMARY OF QUANTITIES									SCP 59-986-26 (East)	Reference Project No
Required Asphalt Resurfacing										
Unit #	Road Number / Name	401B111	405A000	410H000	424A361	424A370	424B650	424B656		
		G-Treatment (With Polymer Additive)	Tack Coat	Material Remixing Device	Bit. Wearing Surface 3/4" Max - ESAL (C/D)	Widening - Bit. Wearing Surface 3/4" Max - ESAL (C/D)	Bit. Upper Binder 3/4" Mix - ESAL (C/D)	Patching - Bit. Upper Binder 1.5" Max - ESAL (C/D)		
		SY	Gal.	EA	Ton	Ton	Ton	Ton		
1E	CR-71	57,100	600	1	4,720	200		300	2026	Fiscal Year
2E	Woodland Drive	2,580	100		215			50		
3E	CR-415 (River Front Street)	520			45			50		
4E	Willow Lane	2,010			170			75		
5E	CR-408	5,280	200		440			50		
6E	Christy Drive	2,800	100		235			50		
7E	Dusty Hollow Road	10,990	30		920			150		
8E	Vantana Drive	2,560	20		215					
9E	CR-28	26,850	250		2,220			225		
10E	Queen Road				160		210			
11E	CR-56	9,760	150		810			50	3A	Sheet No
12E	Mallary Road	14,350	200		1,190			400		
13E	CR-47	46,920	400	1	4,350	250		125		
14E	CR-469	5,000	100		415			100		
15E	Sun Valley Circle	3,190	100		265			125		
16E	CR-57	28,000	25		2,310			40		
Totals:		217,910	2,275	2	18,680	450	210	1,790		

SUMMARY OF QUANTITIES									SCP 59-986-26 (East)	Reference Project No
Required Asphalt Resurfacing										
Unit #	Road Number / Name	424B658	701A011	701A016	701A227	701A230	701A244	701B207		
		Leveling - Bit. Upper Binder 3/4" Max - ESAL (C/D)	Broken Yellow, Class 1, Type A Traffic Stripe (5" Wide)	Solid Yellow, Class 1, Type A Traffic Stripe (5" Wide)	Solid White, Class 2, Type A Traffic Stripe (5" Wide)	Solid Yellow, Class 2, Type A Traffic Stripe (5" Wide)	Broken Yellow, Class 2, Type A Traffic Stripe (5" Wide)	Dotted, Class 2, Type A Traffic Stripe		
		Ton	Mile	Mile	Mile	Mile	Mile	LF		
1E	CR-71	300			10	10			2026	Fiscal Year
2E	Woodland Drive									
3E	CR-415 (River Front Street)									
4E	Willow Lane									
5E	CR-408									
6E	Christy Drive									
7E	Dusty Hollow Road	150								
8E	Vantana Drive	50								
9E	CR-28	175			5	3	2			
10E	Queen Road	50			1	1				
11E	CR-56	100	1	2					3B	Sheet No
12E	Mallary Road	250			3	3				
13E	CR-47	250			5	5	1	500		
14E	CR-469	50								
15E	Sun Valley Circle	50								
16E	CR-57	30			5	5	1			
Totals:		1,455	1	2	29	27	4	500		

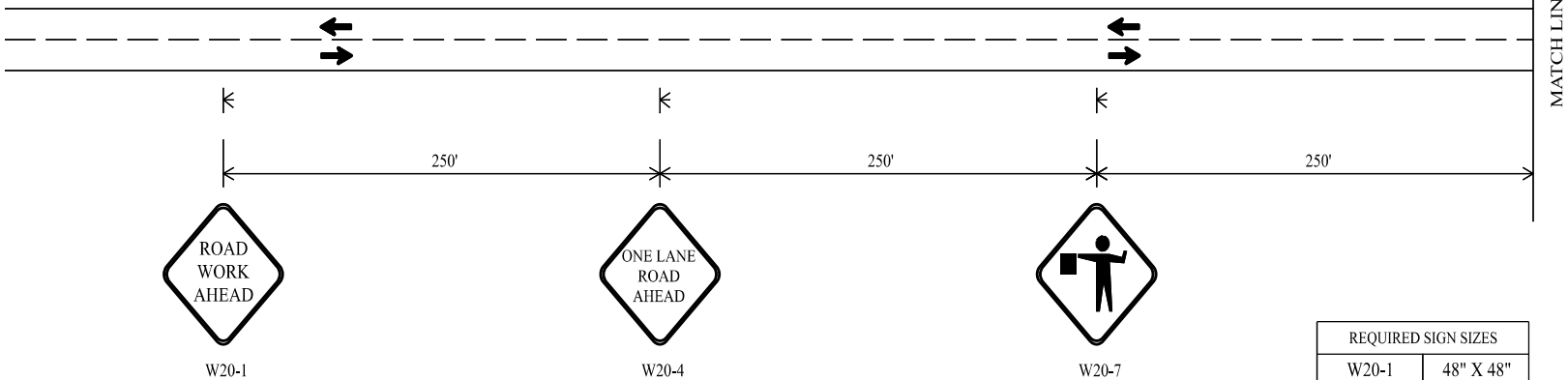
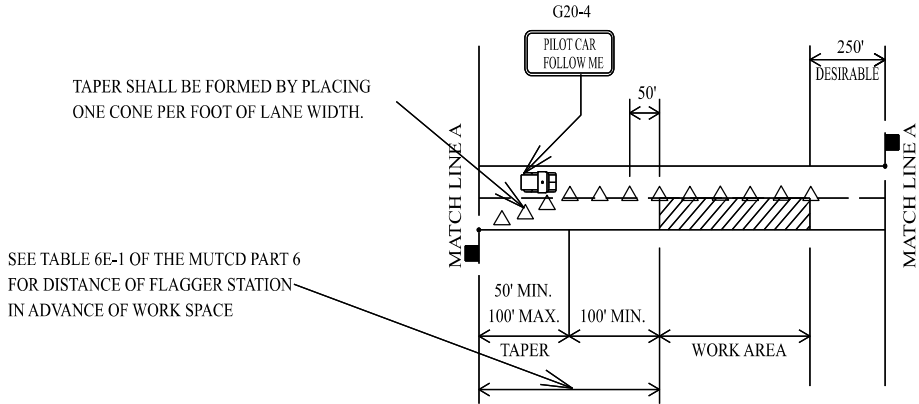
Rebuild Alabama

SUMMARY OF QUANTITIES									SCP 59-986-26 (East)	Reference Project No
Required Asphalt Resurfacing										
Unit #	Road Number / Name	701C002	701C003	703A002	703B002	703D002	705A030	705A032		
		Broken Temporary Traffic Stripe (Paint)	Solid Temporary Traffic Stripe (Paint)	Traffic Control Markings, Class 2, Type A	Traffic Control Legends, Class 2, Type A	Temporary Traffic Control Markings (Paint)	Pavement Markers, Class A-H, Type 2-C	Pavement Markers, Class A-H, Type 1-B		
		Mile	Mile	SF	SF	SF	EA	EA		
1E	CR-71		20	600		600			2026	Fiscal Year
2E	Woodland Drive									
3E	CR-415 (River Front Street)			40						
4E	Willow Lane			40						
5E	CR-408									
6E	Christy Drive									
7E	Dusty Hollow Road			140	144	137				
8E	Vantana Drive									
9E	CR-28		10	64		64				
10E	Queen Road			40						
11E	CR-56	2	4						3C	Sheet No
12E	Mallary Road		6	160	137	160				
13E	CR-47	2	15	2,000	100	1,000	36	210		
14E	CR-469		10	100	50	100				
15E	Sun Valley Circle			40		40				
16E	CR-57			40						
Totals:		4	65	3,264	431	2,101	36	210		

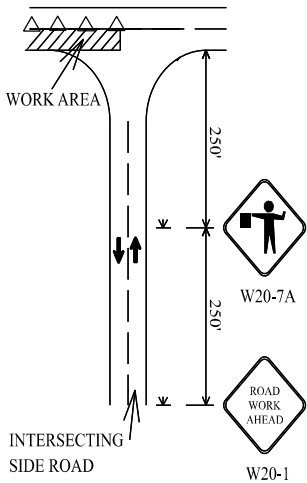
SUMMARY OF QUANTITIES									Reference Project No
Required Asphalt Resurfacing									SCP 59-986-26 (East)
Unit #	Road Number / Name	705A037	705A038						Fiscal Year
		Pavement Markers, Class A-H, Type 2-D	Pavement Markers, Class A-H, Type 2-E						
		EA	EA						
1E	CR-71	605							2026
2E	Woodland Drive								
3E	CR-415 (River Front Street)								
4E	Willow Lane								
5E	CR-408								
6E	Christy Drive								
7E	Dusty Hollow Road								
8E	Vantana Drive								
9E	CR-28	303							
10E	Queen Road	19							
11E	CR-56	116							
12E	Mallary Road	154							
13E	CR-47	360	160						3D
14E	CR-469								
15E	Sun Valley Circle								
16E	CR-57	300							
Totals:		1,857	160						

TRAFFIC CONTROL PLAN SHEET

TWO LANE HIGHWAY, ONE LANE CLOSURE



REQUIRED SIGN SIZES	
W20-1	48" X 48"
W20-4	48" X 48"
W20-7	48" X 48"
G20-4	36" X 18"



TRAFFIC CONTROL FOR INTERSECTING SIDE ROADS WITHIN WORK AREA

NOTE: THE W20-1 AND W20-7A SIGNS TO BE USED ON INTERSECTING ROADS SHALL BE 36"X36" IN SIZE. THE TEMPORARY MOUNTED W20-1 ROAD WORK AHEAD SIGN SHOWN ON THE SIDE ROAD WILL NOT BE REQUIRED IF ONE IS ALREADY POST MOUNTED ON THE SIDE STREET.

- LEGEND
- TEMPORARY MOUNTED SIGN
 - POST MOUNTED SIGN
 - CONE WITH BALAST
 - FLAGGER

DESIGN BUREAU SPECIAL DRAWING DETAILS FOR TRAFFIC CONTROL FOR RESURFACING TWO LANE HIGHWAYS		
DRAWN BY: _____	SPECIAL PROJECT DETAIL	INDEX NO.
DATE DRAWN: _____		
SHEET TITLE		ROUTE
		VARIOUS

NOT TO SCALE

TEMPORARY TRAFFIC CONTROL PLAN SHEET

REFERENCE PROJECT NO
SCP 59-986-26 (EAST)

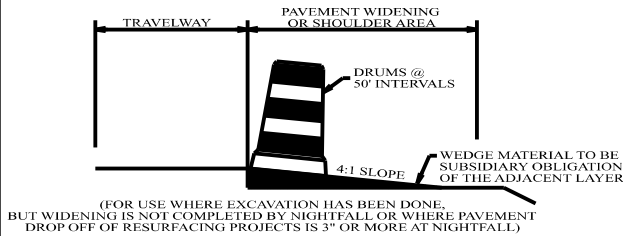
FISCAL YEAR

2026

SHEET NO

5

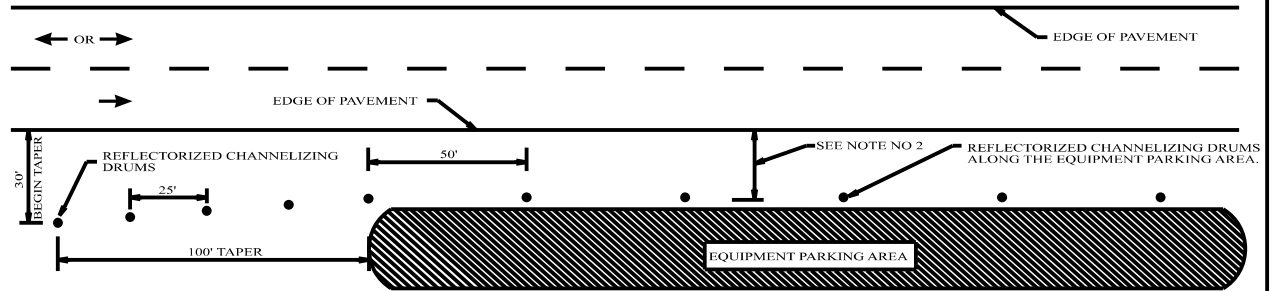
5



TYPICAL FOR DROP-OFF AT EDGE OF PAVEMENT

NOTE:
THE CONTRACTOR IS TO CONSTRUCT A WEDGE OF UNCLASSIFIED EXCAVATION OR CRUSHED AGGREGATE BASE. THE COST OF PLACING AND REMOVAL SHALL BE A SUBSIDIARY OBLIGATION OF THE ADJACENT LAYER.

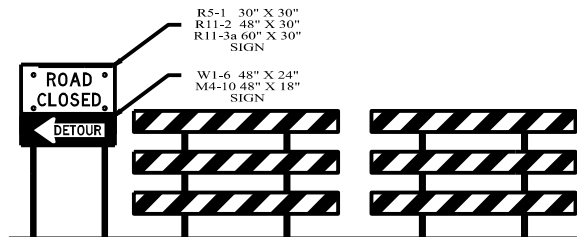
CHANNELIZING DRUMS SHALL BE PLACED AT 50 FT INTERVALS.



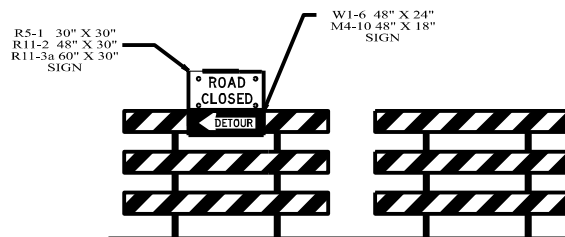
NOTES:

1. SEE GENERAL TRAFFIC CONTROL PLAN NOTE NO. 711.
2. DRUMS TO BE AS FAR AS PRACTICAL FROM EDGE OF PAVEMENT. MINIMUM DESIRABLE DISTANCE IS 15 FEET FOR FREEWAY TYPE FACILITIES AND 10 FEET FOR OTHER FACILITIES. FOR UNUSUAL CONDITIONS, SUCH AS SPECIAL EQUIPMENT OR LIMITED AVAILABLE SPACE, DIMENSIONS LESS THAN DESIRABLE SHALL BE AS DIRECTED BY THE ENGINEER.
3. ALL DEVICES TO BE FURNISHED BY THE CONTRACTOR WITHOUT COST TO THE COUNTY.

DELINEATING DETAIL FOR EQUIPMENT PARKING OR STORING AREA



DETAILS FOR TYPICAL PLACEMENT OF TYPE III BARRICADES INSIDE OF CLEAR ZONE



DETAILS FOR TYPICAL PLACEMENT OF TYPE III BARRICADES OUTSIDE OF CLEAR ZONE

NOTES

1. SLOPE OF STRIPES ON BARRICADES SHALL BE IN ACCORDANCE WITH SECTION 6F.68 OF THE MUTCD AND DRAWING B-107-2.
2. IF SIGNS ARE REQUIRED TO BE USED IN CONJUNCTION WITH TYPE III BARRICADES TO BE PLACED INSIDE THE CLEAR ZONE, THEY SHALL BE POST MOUNTED TO THE SIDE OF THE BARRICADES AS SHOWN.
3. IF ROAD CLOSED OR DETOUR SIGNS ARE REQUIRED TO BE USED WITH TYPE III BARRICADES TO BE PLACED OUTSIDE THE CLEAR ZONE, THEY SHALL BE PLACED ON THE TOP OF THE BARRICADES NEAREST THE DETOUR.

NOT TO SCALE

—SPECIFICATIONS—
CURRENT ALABAMA DEPARTMENT OF TRANSPORTATION



ALABAMA DEPARTMENT
OF TRANSPORTATION
1400 COLUMBIA BOULEVARD
MONTGOMERY, AL 36106-0000

THIS DRAWING REPRESENTS DESIGNS PREPARED FOR USE BY THE ALABAMA DEPARTMENT OF TRANSPORTATION AND IS NOT TO BE COPIED, REPRODUCED, ALTERED OR USED BY ANYONE, OR ANY ORGANIZATION, WITHOUT THE EXPRESSED WRITTEN CONSENT OF THE ALABAMA DEPARTMENT OF TRANSPORTATION REPRESENTATIVE. AUTHORIZED TO APPROVE THIS USE. ANYONE MAKING UNAUTHORIZED USE OF THIS DRAWING MAY BE PROSECUTED TO THE FULLEST EXTENT OF THE LAW.

REVISIONS: 1. Corrected text overlap on 12-8-2021 by D.J.W.

Revised Std. Page: 013 W
DRAWN BY: [Signature]
DATE DRAWN: 12/8/2021
REVISED DATE: 12/8/2021

DESIGN BUREAU SPECIAL DRAWING
STANDARD DETAILS FOR
TRAFFIC CONTROL PLANS

SPECIAL DRAWING NO
SPECIAL PROJECT DETAIL
INDEX NO
2001